



AER CONDITIONAT

EFICIENTA MAXIMA

CONDITII EXTREME

A+++

UV
lamp

Ionizare

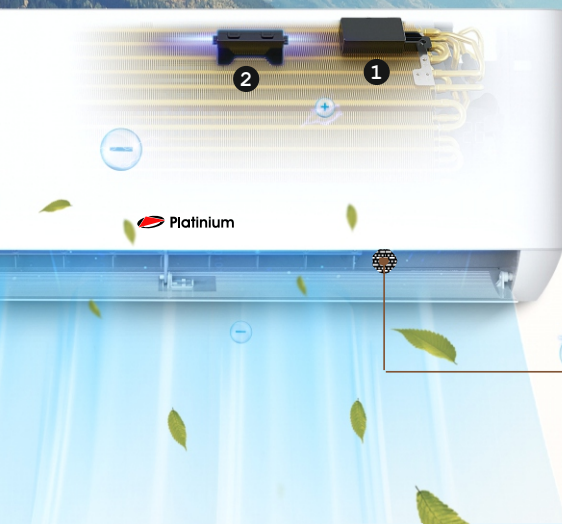
GENTLE

-25°C

Rezistentă
degivrare

WI-FI

3D
air flow



1 Generator ioni incorporat

Generatorul de ioni este pozitionat inaintea fantei de refulare aer
Genereaza ioni in vederea ionizarii aerului
Are ca rezultat distrugerea bacteriilor si virusilor

2 Sterilizare UVC

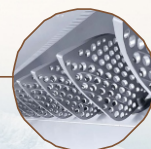
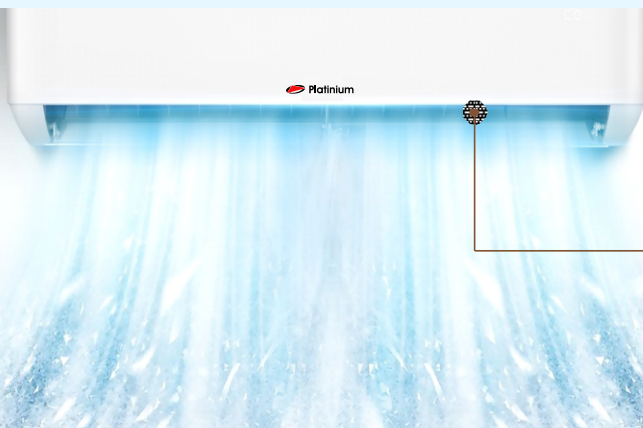
Radiatii UVC : 240nm - 280nm
Omoara bacteriile afectandu-le proteina si ADN-ul

Eliminare bacterii

> 98.66%

Turbo Cooling

- Pornire la frecventa ridicata
- Racire rapida pana la 30 %
- Volum de aer crescut pana la 20%
- Nivel de zgomot redus cu 1- 2 dB(A)

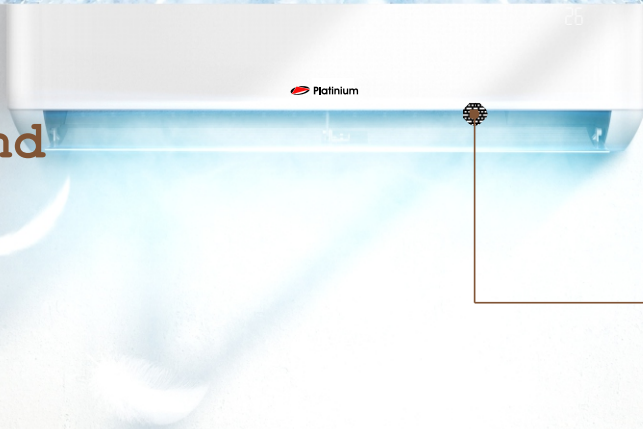


Gentle Cool Wind

Flapsuri verticale - Gentle cool wind



Patent Inventie:
No. 3712066



SEER A+++

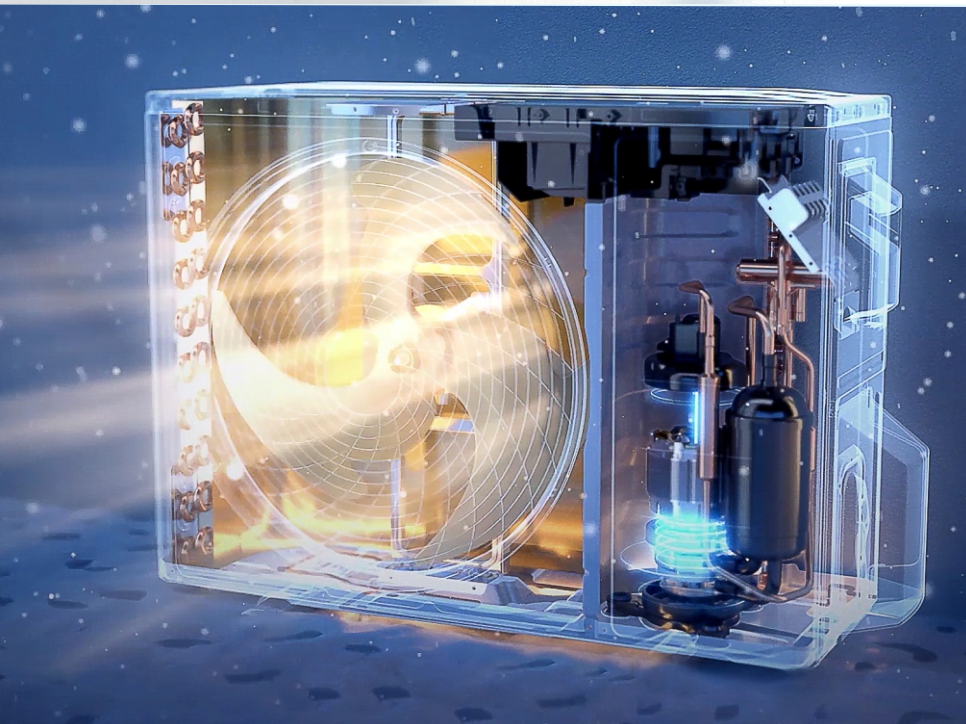
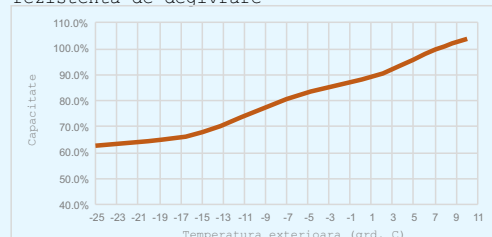
Full 5 D

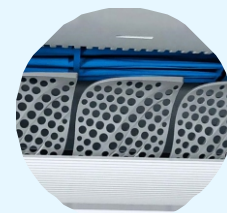
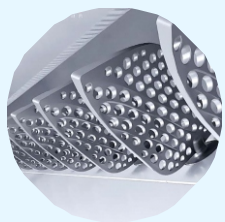


Nivel de eficienta energetica comparativ cu A++

INCALZIRE

Incalzirea la -25°C temperatura exterioară cu rezistenta de degivrare





Model			PWIFI-12 +++ NORDIC	PWIFI-18 +++ NORDIC	PWIFI-24 +++ NORDIC
			R32 12000Btu	R32 18000Btu	R32 24000Btu
Capacitate racire		W	3510(1000-4600)	5100(1250-5920)	6910(1830-7820)
Capacitate incalzire		W	3800(1000-4900)	5800(1250-6690)	7100(1850-7960)
SEER			8.5	8.5	8.5
Clasa energetica pt racire			A+++	A+++	A+++
SCOP			4.6	4.6	4.6
Clasa energetica pt incalzire			A++	A++	A++
Consum anual	Racire	kWh	145	210	285
	Incalzire	kWh	792	1370	1674
Capacitate dezumidificare		L/h	1.2	1.5	2.0
Nivel zgomot unitate interioara	(T,H,M,L,Mute)	dB(A)	53/48/43/38/32	57/54/50/45/40	58/55/50/43/40
Nivel zgomot unitate exterioara		dB(A)	63	64	69
Presiune sunet unitate interioara	(T,H,M,L,Mute)	dB(A)	43/38/33/29/22	47/42/38/32/28	48/45/40/34/30
Presiune sunet unitate exterioara		dB(A)	53	54	59
Date electrice					
Alimentare			220-240V~/50Hz/1P	220-240V~/50Hz/1P	220-240V~/50Hz/1P
Curent de operare	Racire	A	4.6(1.5-9.2)	5.6(1.7-12)	8.7(2.3-15.5)
Curent de operare	Incalzire	A	4.4(1.5-10.0)	5.9(1.7-13.0)	8(2.3-16.0)
Putere consumata	Racire	kW	1 (0.29-1.51)	1.26 (0.33-2.35)	1.94 (0.41-2.83)
Putere consumata	Incalzire	kW	0.97(0.29-1.72)	1.33(0.34-2.54)	1.81(0.42-3.01)
Sistem de refrigerare					
Tip refrigerant / Incarcare			R32/0.63kg	R32/1.14kg	R32/1.27kg
Compresor	Type		Rotary	Rotary	Rotary
	MFG		GMCC	GMCC	SANYO
Volum aer interior		m3/h	670	1000	1100
Volum aer exterior		m3/h	2200	3000	4000
Dispozitiv expansiune			Valva de expansiune	Valva de expansiune	Valva de expansiune
Tevi Conexiune	Gaz	Inches	3/8"	1/2"	1/2"
	Lichid	Inches	1/4"	1/4"	1/4"
Altele					
Aria aplicabila		m ²	14~30	20~45	27~60
Lungime maxima traseu		m	15	25	25
Diferenta max de inaltime		m	10	10	10
Temperatura ambient (Racire / Incalzire)	Exterior	grd C	Rac :-15~53/Inc : -25~30	Rac :-15~53/Inc : -25~30	Rac :-15~53/Inc : -25~30
	Interior	grd C	Rac: 17~32/Inc: 0~30	Rac:17-32/Inc:0-30	Rac:17-32/Inc:0-30
Dimensiuni nete	Interior	mm	820×306×195	1100×333×222	1100×333×222
(W x H x D)	Exterior	mm	795×549×305	920×699×380	967×803×421
Greutate neta	Interior	kg	9.5	13	14
	Exterior	kg	25	37	47