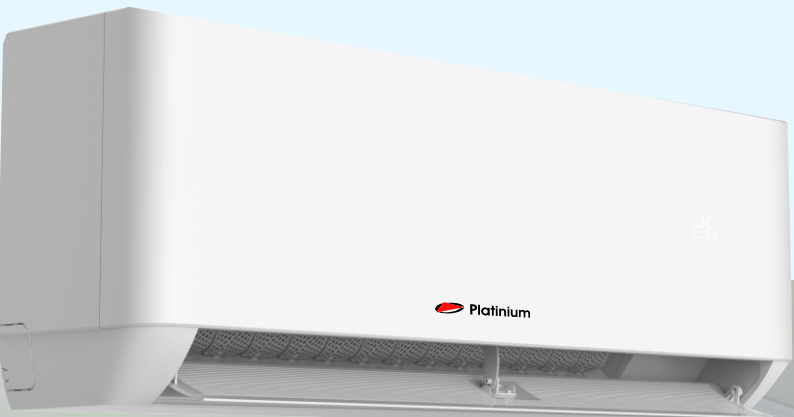


 **Platinum**

GENTLE



A++

UV
lamp

Ionizare

GENTLE

-20°C

Auto
curatare

WI-FI

3D
air flow

Sterilizare UVC

Lampa LED UVC incastrata in vaporizator,

UVC radiatii: 240nm-280nm

Rata eliminare bacterii > 99%



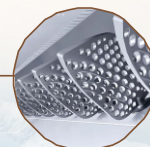
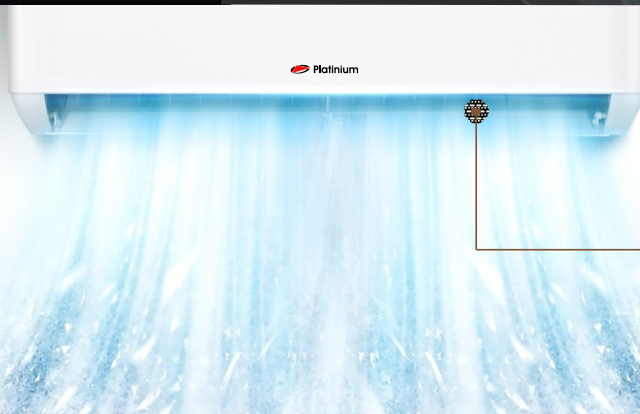
Generator ioni



- Generatorul ionic este incorporat langa gura de evacuare a aerului rece
- Genereaza plasma, atomi ionizati, H₂O₂, etc.
- Distrige bacteriile si virusii

Turbo Cooling

- Pomire la frecventa ridicata
- Racire rapida pana la 30 %
- Volum de aer crescut pana la 20%
- Nivel de zgomot redus cu 1- 2 dB(A)

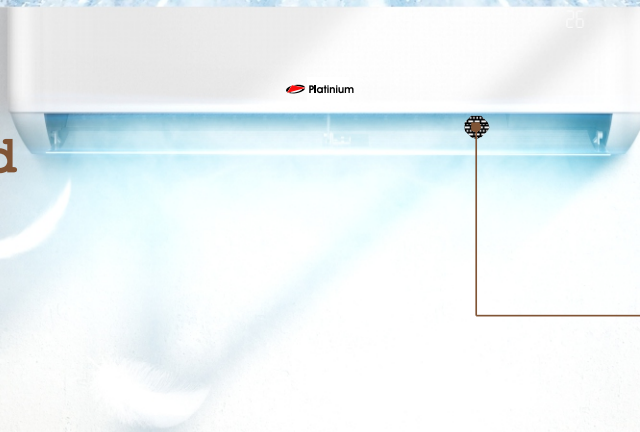


Gentle Cool Wind

Flapsuri verticale - Gentle cool wind



Patent Inventie:
No. 3712066



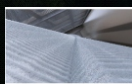
Racire eficienta si la temperaturi
externe ridicate



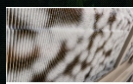
Incalzire eficienta si la temperaturi
scazute



Auto-curatare si sterilizare
la 56 grad C



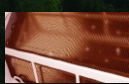
Inghetare



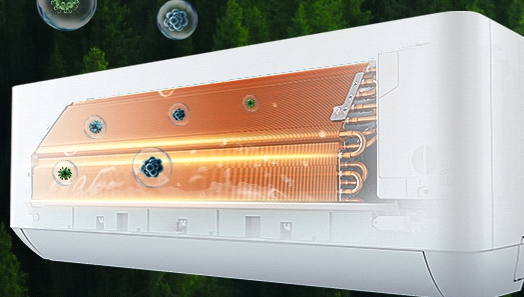
Dezghetare

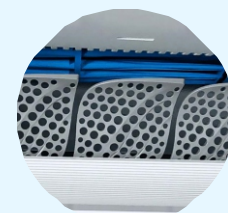
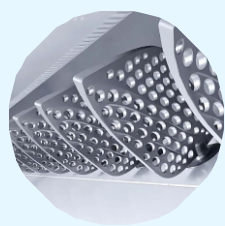


Uscare la temperatura
inalta



Sterilizare la 56°C





Model			PWIFI-09BION ++UV	PWIFI-12BION ++UV	PWIFI-18BION ++UV(N)	PWIFI-24BION ++UV
Capacitate racire		W	R32 9000Btu 2600(940-3300)	R32 12000Btu 3400(1000-3770)	R32 18000Btu 5100(1250-5900)	R32 24000Btu 6840(1830-7820)
Capacitate incalzire		W	2630(940-3360)	3430(1000-3810)	5130(1250-6080)	7050(1850-7960)
SEER			6.3	6.1	6.1	6.5
Clasa energetica pt racire			A++	A++	A++	A++
SCOP			4	4	4	4.6
Clasa energetica pt incalzire			A+	A+	A+	A+
Consum anual	Racire	kWh	144	195	293	366
	Incalzire	kWh	735	840	1330	1995
Capacitate dezumidificare		L/h	1	1.2	1.5	1.8
Nivel zgomot unitate interioara	(T,H,M,L,Mute)	dB(A)	51/47/43/35/32	51/47/43/35/32	54/50/47/43/36	58/52/48/44/41
Nivel zgomot unitate exteriora		dB(A)	60	60	65	68
Presiune sunet unitate interioara	(T,H,M,L,Mute)	dB(A)	41/37/33/25/22	41/37/33/25/22	43/41/38/35/27	47/42/38/34/31
Presiune sunet unitate exteriora		dB(A)	50	50	55	57
Date electrice						
Alimentare			220-240V~/50Hz/1P	9	220-240V~/50Hz/1P	220-240V~/50Hz/1P
Gama Voltaj			165~265	165~265	165~265	165~265
Curent de operare	Racire	A	4.7(1.2-8)	5.1(1.5-9)	8.2(1.7-12)	9.8(2.3-13)
Curent de operare	Incalzire	A	4.2(1.2-9)	4.7(1.5-10.0)	7.2(1.7-13.0)	8.6(2.3-14)
Putere consumata	Racire	W	800 (240-1380)	1049 (290-1500)	1574 (330-2350)	2099 (410-2800)
Putere consumata	Incalzire	W	706(240-1550)	922(290-1730)	1382(340-2550)	1900(420-3000)
Sistem de refrigerare						
Tip refrigerant / Incarcare			R32/0.57kg	R32/0.57kg	R32/1kg	R32/1.11kg
Compresor	Tip		Rotary	Rotary	Rotary	Rotary
	MFG		GMCC	GMCC	GMCC	SANYO
Volum aer interior		m3/h	560	560	820	1100
Volum aer exterior		m3/h	1900	1900	2600	3000
Dispozitiv expansiune			Capilar	Capilar	Capilar	Valva de expansiune
Tevi Conexiune	Gaz	Inch	3/8"	3/8"	3/8"	1/2"
	Lichid	Inch	1/4"	1/4"	1/4"	1/4"
Altele						
Aria aplicabila		m²	10~25	14~30	20~45	27~60
Lungime maxima traseu		m	15	15	25	25
Diferenta max de inaltime		m	10	10	10	10
Temperatura ambient (Racire / Incalzire)	Exterior	grd C	Rac :-15~53/Inc : -20~30	Rac :-15~53/Inc : -20~30	Rac :-15~53/Inc : -20~30	Rac :-15~53/Inc : -20~30
	Interior	grd C	Rac: 17~32/Inc: 0~30	Rac: 17~32/Inc: 0~30	Rac: 17~32/Inc: 0~30	Rac: 17~32/Inc: 0~30
Dimensiuni nete	Interior	mm	790×275×192	790×275×192	920×306×195	1100×333×222
(W x H x D)	Exterior	mm	777×498×290	777×498×290	853×602×349	920×699×390
Greutate neta	Interior	kg	8.5	8.5	11	14
	Exterior	kg	24	24	31	40